



DairyFeed J

For healthy growth of a new generation

GEA Milking & Cooling | WestfaliaSurge

engineering for a better world

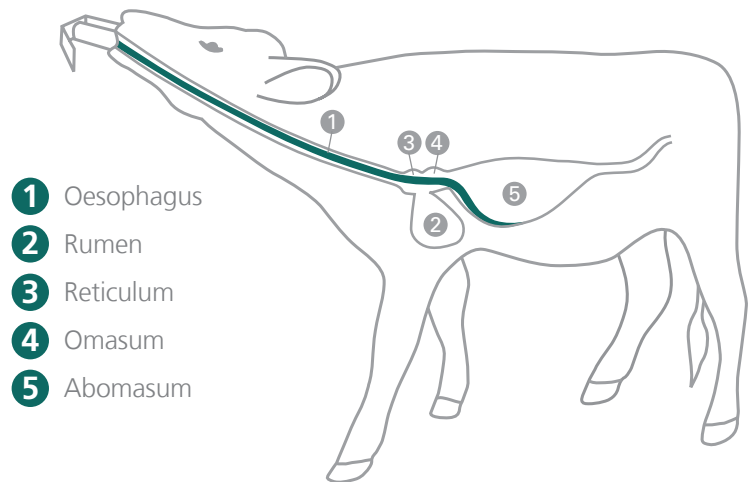
GEA Farm Technologies



Now you can spend your time managing instead of feeding

Decide in the first few weeks.

Healthy calf raising forms the basis for performance orientated and profitable dairy farming. The optimum foundation for successful calf raising is provided by GEA Farm Technologies' automatic calf feeders. They supply your calves according to their needs and reduce your routine work in calf raising to a minimum.



The ideal curve for healthy growth

Each calf develops differently – therefore individual feeding is the key to success. GEA Farm Technologies' automatic calf feeders can be programmed to meet animal requirements: whether for raising, feeding or fattening. Each calf receives what it needs for healthy growth.

Healthy nutrition through constant monitoring

A sudden change in the feeding behaviour is an indicator of poor health in your calves. Therefore, GEA Farm Technologies' feeding systems record the feeding and drinking habits of the calves and

immediately report any deviation. This simplifies calf monitoring and reduces vet costs. Healthy and quick calf growth is therefore guaranteed.



The new automatic calf feeder generation

And your calves grow:

As soon as a calf enters the feeding station and makes known its desire to feed, the exactly determined feed is quickly, hygienically and reliably prepared. Age-dependent and individually – also with fresh milk. To provide your calves with an ideal basis for healthy growth, the calf feeder automatically takes over preparation and enrichment of the feed. The new generation of feeders has been designed around well-proven functions and these are present in the new + version that has additional and improved features:



Clear view

The transparent powder hopper extension makes it quick and easy to check the filling level. You can see at a glance just how much powder is left in the feeder.



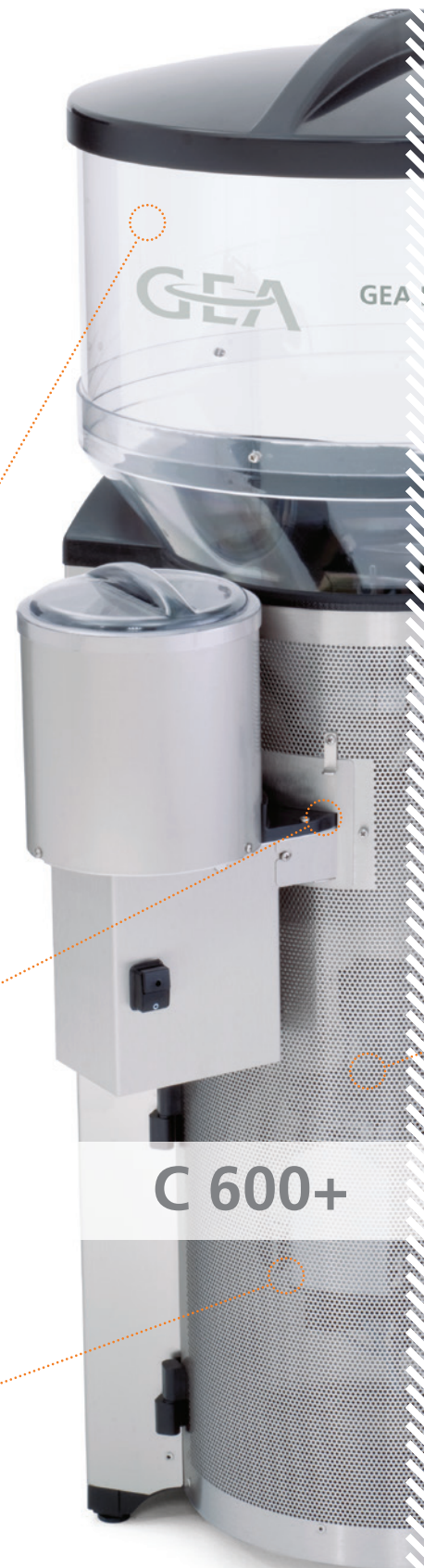
Click and lock

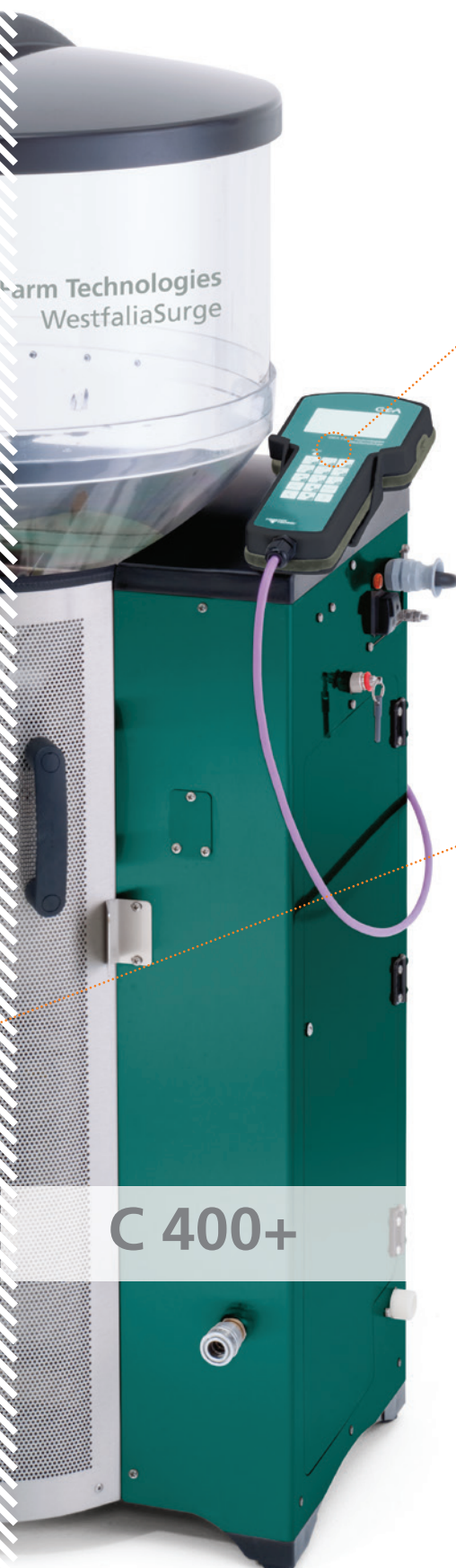
The additional dosing unit can be easily fitted on or removed from the fly screen thanks to the handle and the new, flexible locking system. This also means that the additives can be provided easier and quicker.



Can't be more precise!

The optional automatic calibration system ensures that the weighing cell controls and adjusts all dosings weights. As this process runs automatically it saves a lot of time and you can be sure that its calibration is exact and ideally suited for supplying the feeder.





Operating made easy



The automatic feeders are equipped with the easily operated hand terminal.

The new user friendly interface with extra keys and a large display makes it comfortable to read. The brightness and contrast can be easily reset via the software. Numbers can be entered quickly and directly via the numerical keypad, e.g. for the animal search and for setting up the feeding plans. Short-cut keys enable fast access to a group of calves or a specific animal.

Optimum temperature control, tasty formula



Regardless of the season, weather and storage conditions, thanks to an IQ heating control, the feed is always prepared at the correct temperature. Interval feeding then allocates the feed in an appropriate way throughout the day.

C 400+



Your advantages at a glance:

- Individually, precisely and freshly prepared feed
- Exact feeding temperature through use of IQ heating control
- Small quantity dispenser for powder or liquid type additives (accurate to the gram; for medicine)
- Simple automatic cleaning thanks to various rinsing programs
- Easy operation using hand terminal or PC
- DMS 21 integration via the DP Calf-Feeder module

C 400+

Easy entry level.

It doesn't matter whether it is fresh milk or powdered milk that is provided; the C 400+ can easily feed 50 calves using a maximum of 2 sucking stations. The powerful 32-bit 'H' processor enables extensive function applications: It is now possible to attach other peripheral equipment to the C 400+. It allows concentrate dependent weaning with DairyFeed J 1100 and additive dosing with the use of electrolyte. An enhanced medicinal program is available for maintaining healthy calves.



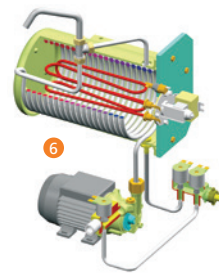
A view of the inner workings:

- ① Water valve opens the supply line to the special boiler
- ② Precise temperature-controlled water portions (0.25 l) are metered into the mixer
- ③ In parallel to the water metering, milk powder is added from the powder reservoir into the mixer
- ④ Feed supply via suction hose and teat – without any waiting.



Additional for the combined automatic feeder:

- ⑥ Heat exchanger warming of the fresh milk, gently and quickly.



SD-card for data back-up

Everything at a glance

Calf monitoring is an important element of herd management, particularly during calf raising. Using the DairyPlan DPCalfFeeder module allows you to integrate all of the DairyFeed J stand-alone calf feeders in DMS 21. You can easily monitor the calf lists from the screen in your office according to the feeding plan. Querying of all important peripheral devices and animal data can be carried out at any time thanks to networking with your office PC.



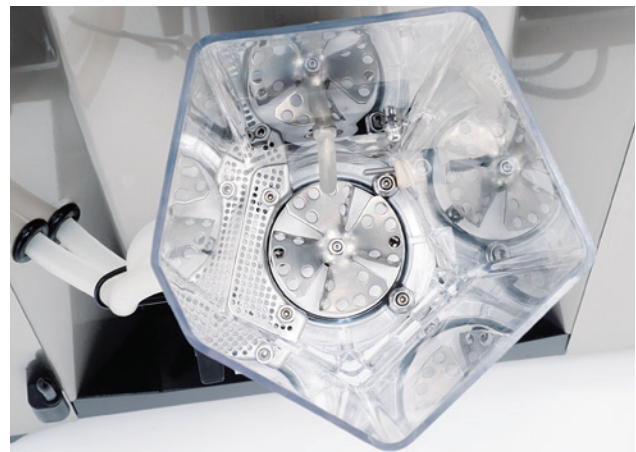
V 600+

Advanced level made easy

The V 600+ automatic calf feeder stands for the latest technology which offers you increased performance, more flexibility and greater ease of use. Individually configured it meets your wishes for up to 60 calves using 2 sucking stations. Modern calf management for healthy growth every day, individually and reliably matched to each calf.

A greater range of functions

The extension up to 4 sucking stations offers feed for a maximum of 120 raising calves. The additional calibration scales and the attaching of peripheral equipment make the V 600+ an unbeatable management system with nearly unlimited capabilities. Meeting the highest claims as regards labour savings, calf health and animal growth.



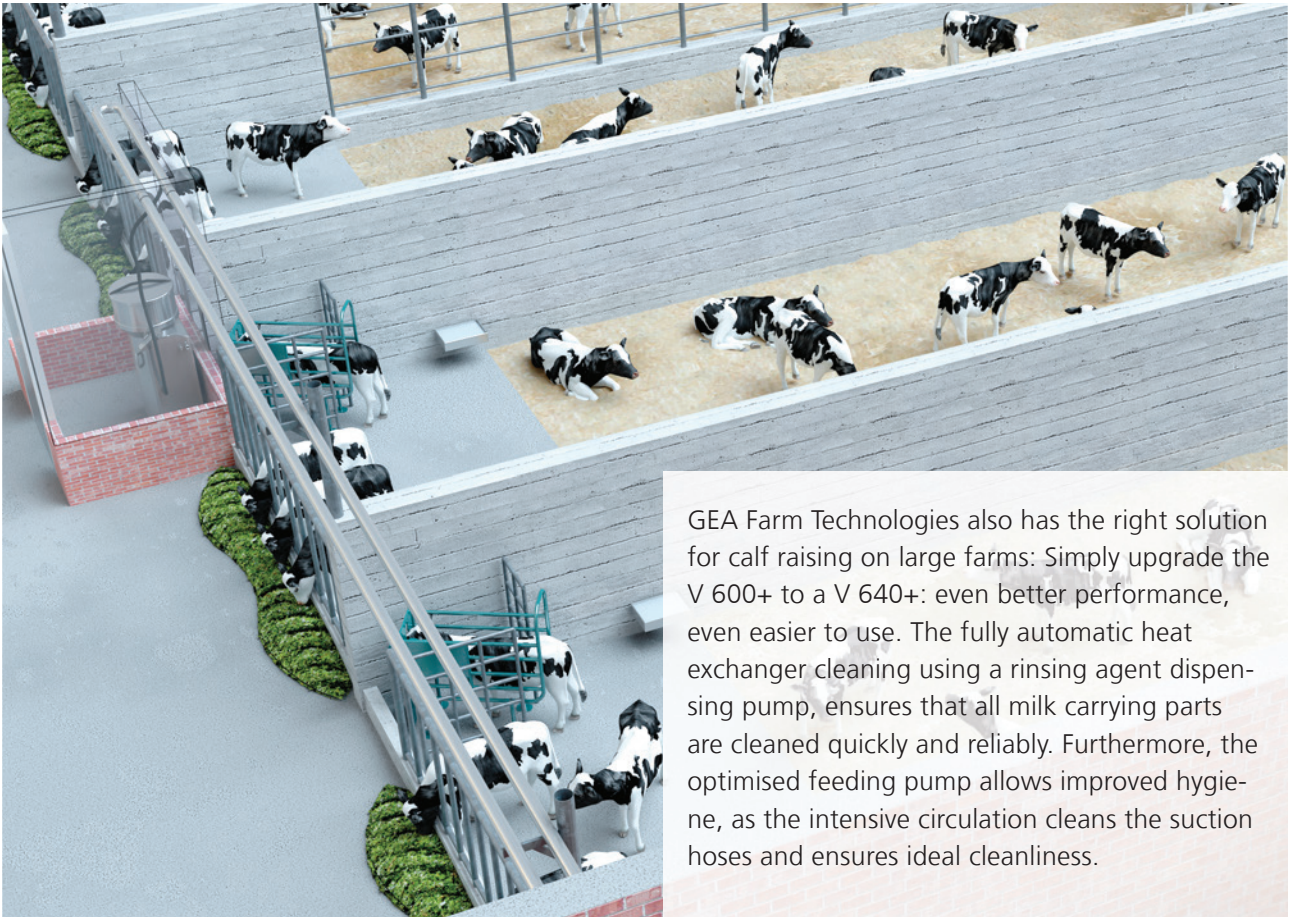
Intensive mixer: The ability to mix flexible portion sizes between 250 and 500 ml, enables ideal calf growth.

The feeder unit with recognition system for neck and ear responders.



V 600+ / V 640+

Calf raising on a grand scale.



GEA Farm Technologies also has the right solution for calf raising on large farms: Simply upgrade the V 600+ to a V 640+: even better performance, even easier to use. The fully automatic heat exchanger cleaning using a rinsing agent dispensing pump, ensures that all milk carrying parts are cleaned quickly and reliably. Furthermore, the optimised feeding pump allows improved hygiene, as the intensive circulation cleans the suction hoses and ensures ideal cleanliness.

Power saving made easy

The innovative low-power circulation pump that is used with the V 640+ can save up to 30% of the previous power consumption!



4 times a winner!

The Quattro module supplies 4 calves per feeder simultaneously. The servo-controlled pump installed at each station feeds the calves age-dependent, so that all calves are fed according to their needs. This ensures optimum growth! The Quattro module can easily be installed with V600+ and V640+ and allows feeding for up to 120 calves from a single automatic feeder.



It's your choice!

Depending on the reason for rearing, the number of calves, and size of your farm, GEA Farm Technologies has the appropriate machine for every need.

Each automatic feeder offers individual accessories – so your precise

Precision Calf Farming – calf rearing for the future



Automatic fresh milk feeder	<input type="radio"/>		<input type="radio"/>
Automatic powdered milk feeder	<input type="radio"/>	<input type="radio"/>	
Combined automatic feeder	<input type="radio"/>	<input type="radio"/>	<input type="radio"/>
Powder capacity	ca. 35 kg	ca. 35 kg	ca. 35 kg
Stainless steel tank (optional)		ca. 50 kg	ca. 50 kg
Fully automatic heat exchanger cleaning with rinsing agent metering pump (optional)	<input type="radio"/>	<input type="radio"/>	<input type="radio"/>
Automatic calibration scales (optional)	<input type="radio"/>	<input type="radio"/>	<input type="radio"/>
Raising farms with	max. 50 calves with 2 sucking points	max. 60 calves with 2 sucking points	max. 60 calves with 2 sucking points
Quattro module with 4 sucking stations (optional)		max. 120 animals with 4 sucking stations	max. 120 animals with 4 sucking stations
Heating power / W.T.V.	2,5 kW / 250 ml	3,2 kW / 500 ml 5,0 kW / 500 ml	3,2 kW / 500 ml 5,0 kW / 500 ml
Liquid feed preparation	1,5 l/min	2,5 l/min	2,5 l/min
Portion sizes	250 ml	250 bis 500 ml	250 bis 500 ml
Stainless steel milk pump	120 W	120 W	250 W

Accessories for automatic calf feeders



Fresh milk vessel with agitator

- Stainless steel vessel and lid
- 120 litre capacity
- VA agitator mechanism with interval control
- No weld seams
- With deep drawn outlet for complete emptying and easy cleaning



Small quantity dispenser for powder-type additives

- Gram-accurate enrichment of highly concentrated additives
- Large capacity (up to 4 kg) for additives, which are to be dosed in large quantities, e.g. electrolytes and diet additives



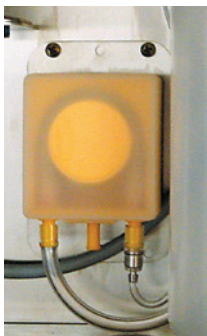
Vapour screen

- Reduced condensation formation and thus reduced caking of milk powder or additives



Heating cable

- Reliable frost protection for cold environments
- Temperature controlled



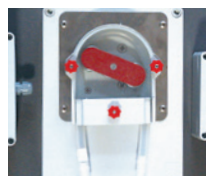
Dosing pump

- Automatic addition of liquid additives or rinse agents
- Exact and reliable metering through reliable geared motor



Fly protection

- Reliably fly-proof
- Large area sieve plate allows steam to escape immediately
- Can be used with small quantity dispenser and/or dispensing pump
- Easy to clean



Servo control

- For distant or higher positioned suction points
- Makes it easier to feed



Feed station expansion
CalfProtect

- Marked reduction in two-calf sucking
- Reduces workload in training calves
- Less competition pressure in large mixed age calf groups
- Simple upgrading possible



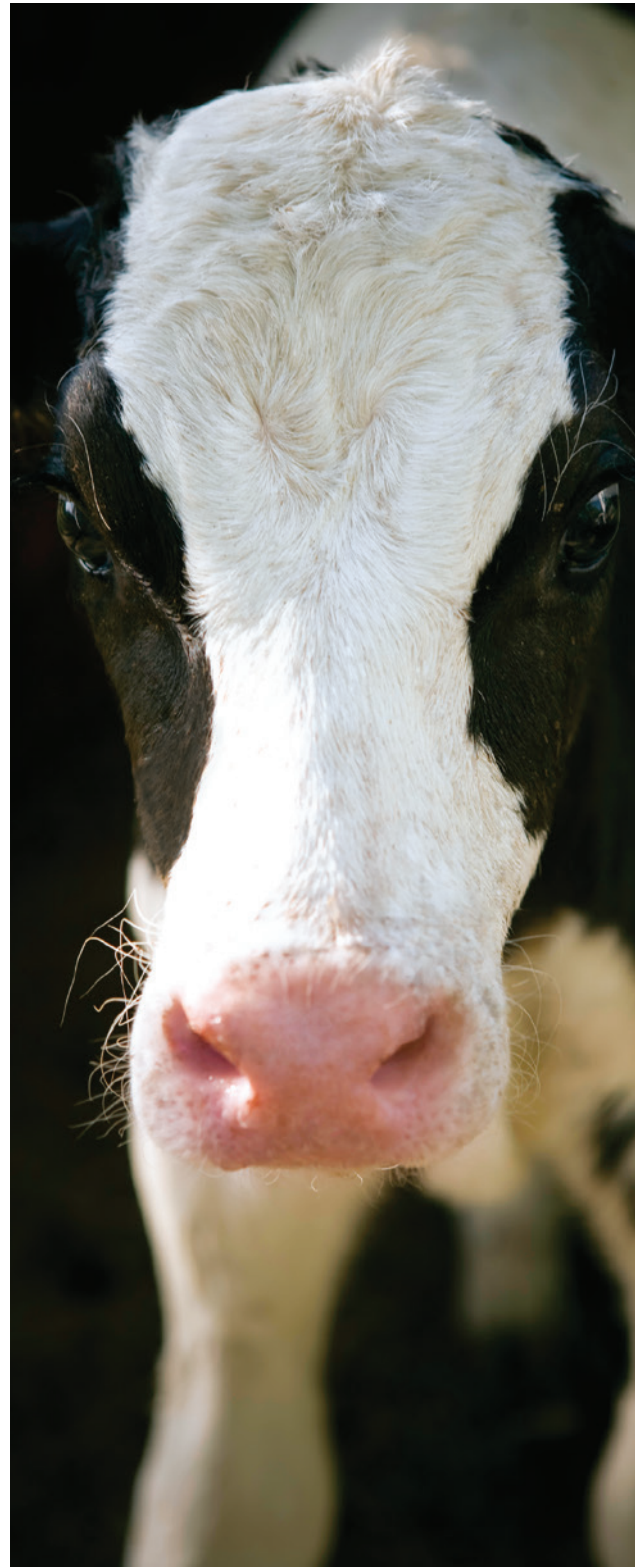
Pulsed compressed air cleaning

- Fully automatic cleaning of suction hose and teat right up to the tip of the teat
- Fully automatic dry blowing in the pauses between drinking; therefore no freezing on drink residues in the suction hose and suction teat

DairyFeed J 1100

Early use of concentrate feed speeds growth of the young calves and replaces milk sooner, which is the most expensive feed. The concentrate feeding system DairyFeed J 1100 is thus the ideal expansion to GEA Farm Technologies calf feeders. It ensures, in conjunction with the DairyManagementSystem 21, an exact, individual allocation of concentrate and optimized dosing. Food allocation from the 110 litre capacity concentrate feed vessel is via an exact volume doser. A light sensor controls and regulates the food quantity and ensures that refilling only takes place after complete emptying of the stainless steel pan. Irregularities in food intake are quickly recognized, thus ensuring that the likelihood of infection within the herd is lowered. In this way, concentrate feed intake can also be used to control liquid feed supply.

*The Concentrate Feeding System
DairyFeed J 1100 in use.*





We live our values.

Excellence • Passion • Integrity • Responsibility • GEA-versity

GEA Group is a global engineering company with multi-billion euro sales and operations in more than 50 countries. Founded in 1881, the company is one of the largest providers of innovative equipment and process technology. GEA Group is listed in the STOXX® Europe 600 index.

GEA Farm Technologies GmbH

Siemensstraße 25 - 27, D-59199 Bönen
Tel. +49 (0) 23 83 93 7-0, Fax +49 (0) 23 83 93 8-0
www.gea.com | www.gea-farmtechnologies.com